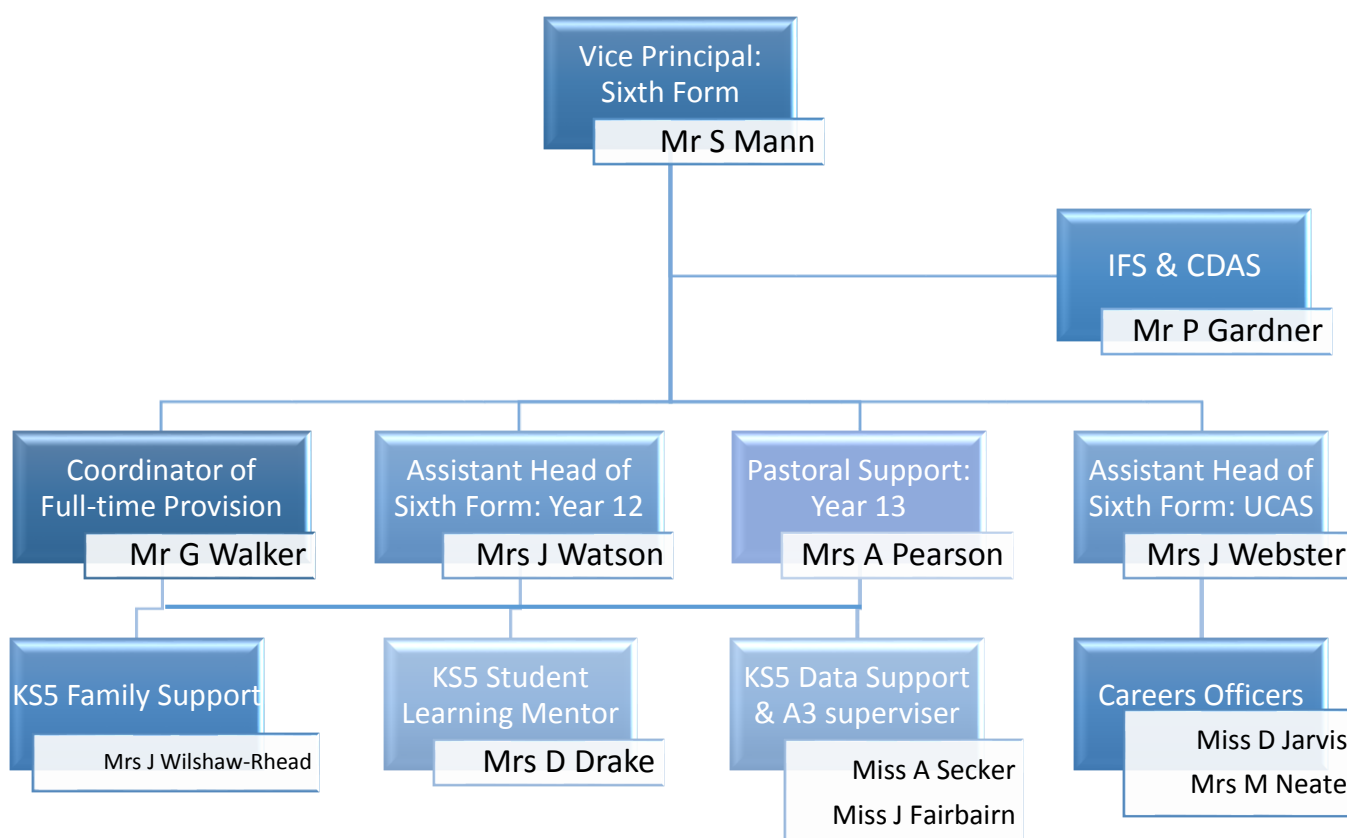


Sixth Form Leadership & Support Team 2017



Pastoral Support Personnel

An extensive range of specialist support personnel for a wide range of needs.

-  Y12, Y13 and Full-time Pastoral Coordinators
-  KS5 Family Support Officer, Leicester Street Support Workers
-  KS5 Student Support Officer, Silent Study Supervisor
-  School Nurse drop-in, CAB – Youth Services
-  UCAS Coordinator, Careers Officers
-  UCAS Clearing Team
-  Sixth Form Specialist form tutors with subject focus

Assessment & Reporting

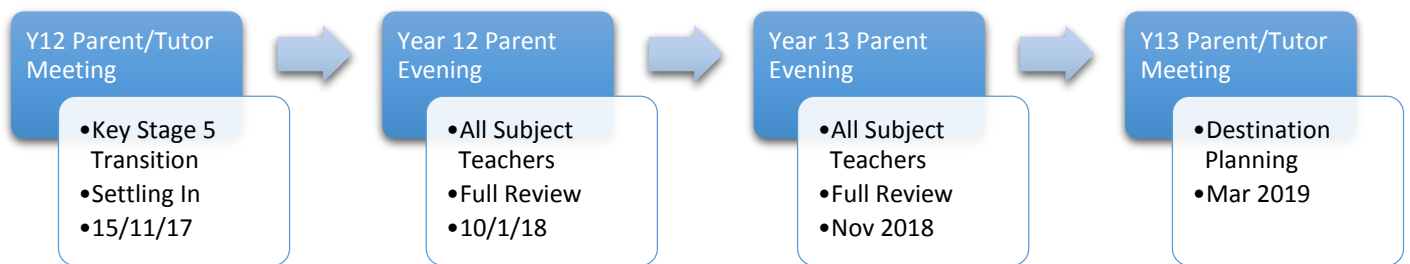
There are a number of formal assessment and reporting points during the year as follows:

- Formal Assessments: w/b 20 November
- Year 12 Exams: w/b 30 April
- Progression into Y13 is dependent on passing Y12 Exams and passing all Y12 Vocational Units
- There are five reporting points during the year:



Parent & Teacher Meetings

Four timely opportunities to meet face to face with tutors and/or teachers.



Independent Study

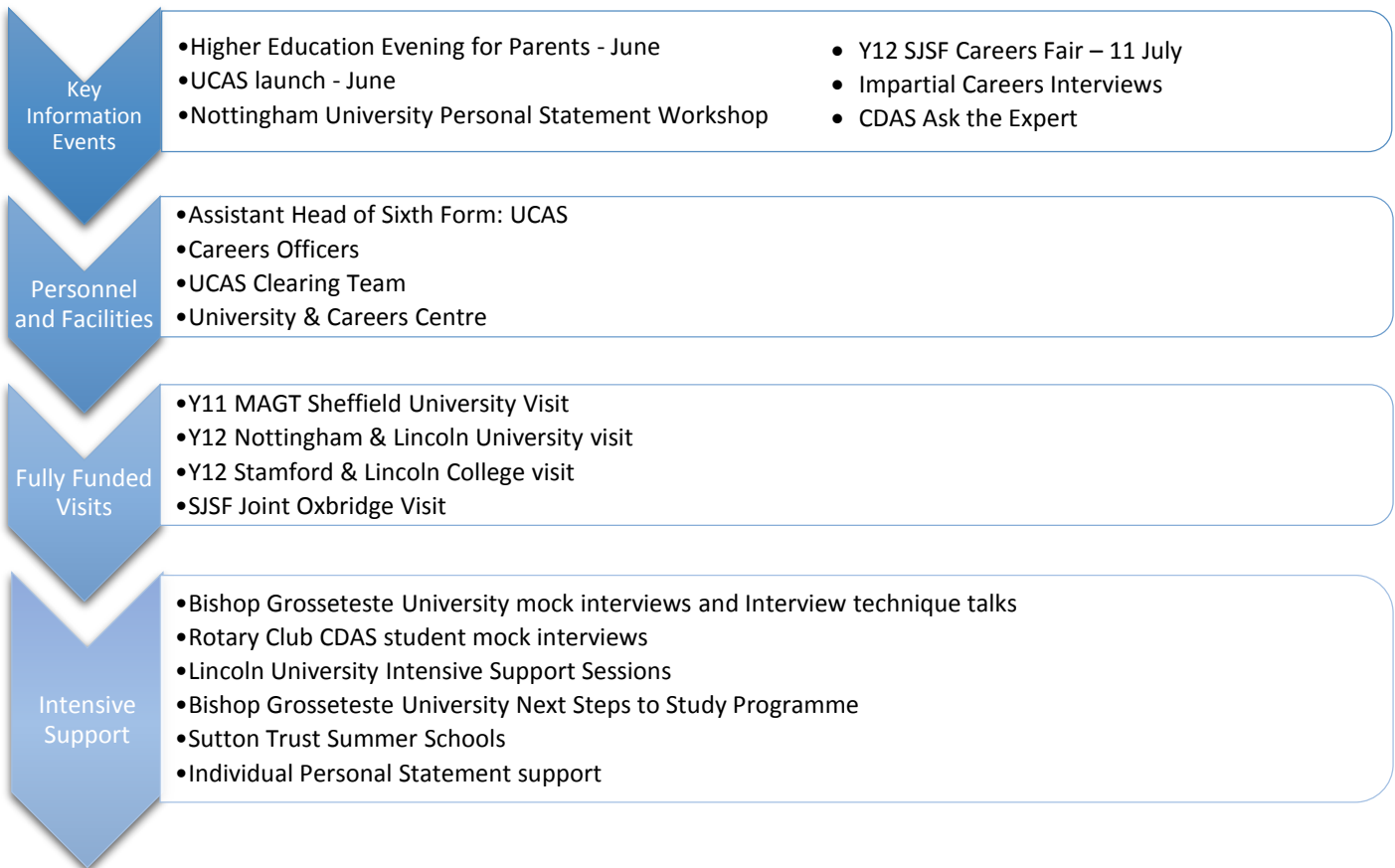
- Becoming an independent learner is the key to success in Sixth Form and also important preparation for next steps
- Students are required to spend about 15 hours outside of school time on their studies
- In addition to formal homework, students should:
 - Review their learning
 - Undertake research and background reading
 - Act on teacher feedback
- Effective organisation is key – they should have a good folder system and some way of taking an overview of their 'to do' list

Sixth Form Planner -designed by students for students

- Learning Review pages for the holidays with tips
- Interim Review section (green) – parent signature
- Study aids (lilac)
- Future planning (peach)
- Parent's Evening Appt sheet (last page)

UCAS and Careers (CDAS) Guidance

Supporting informed decisions about next steps after Sixth Form through a wide range of events, opportunities and specialist support.



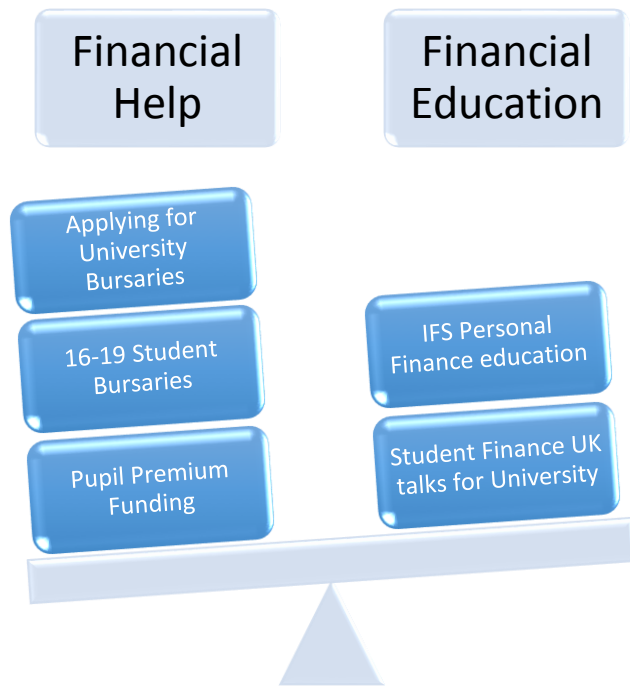
Employability Enhancement Opportunities

Helping our students stand out from the crowd results in an excellent university offers rate and virtually every student moves on to employment or higher education.



Financial Support & Guidance

Supporting students and families who need help to ensure access to Sixth Form study as well as helping students develop their own economic well-being.



Personal, Social & Health Education

Friday lesson 1, every week, students experience a wide range of activities to provide awareness and education to equip them for life.

Personal Health	Safety	Knowledge of Wider World	Study Skills
<ul style="list-style-type: none">• Sexual health assemblies• School Nurse drop-in• Mental health support & referrals• Healthy eating	<ul style="list-style-type: none">• Internet safety• Driving Simulator• Road Safety ILID Day• First Aid training• Social Media	<ul style="list-style-type: none">• IFS Certificate in Personal Finance• Alcohol & Drug Awareness• Tolerance & Diversity• Careers Education	<ul style="list-style-type: none">• Time Management• Research techniques• Revision techniques• Stress Management• Organisation

The most successful Sixth Former will...

- Thoroughly complete their transition packs and hit the ground running
- Be here every day, taking part
- Communicate effectively with
 - Teachers
 - Tutor
 - Mr Mann, Mrs Watson/Mr Walker and Mrs Drake
 - Parents
- Use study periods effectively, planning what to do in advance
- Use their planner effectively
- Have a filing system for their studies
- Be proactive when they have a problem
- Work very hard

Is there anything here that your son/daughter can't do?