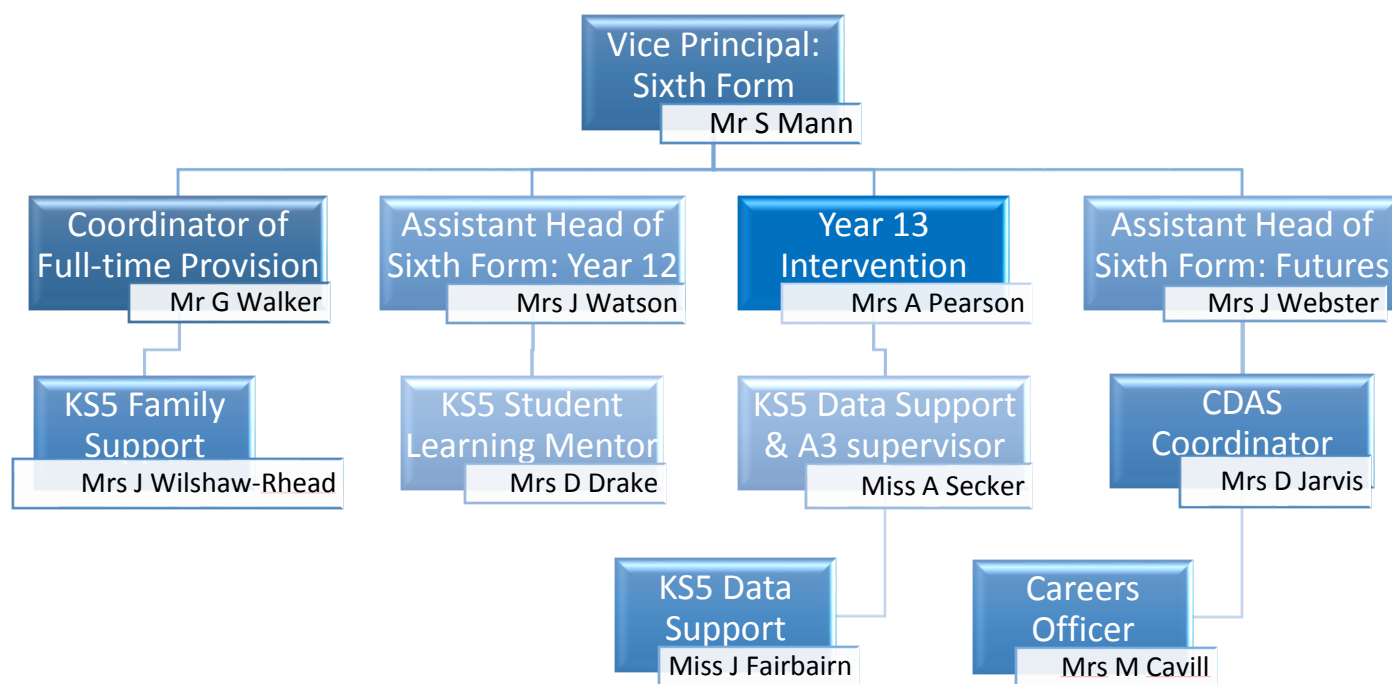


## Sixth Form Leadership & Support Team 2018



## Pastoral Support Personnel

An extensive range of specialist support personnel for a wide range of needs.

-  Y12, Y13 and Full-time Pastoral Coordinators
-  KS5 Family Support Officer, Leicester Street Support Workers
-  KS5 Student Support Officer, Silent Study Supervisor
-  School Nurse drop-in, CAB – Youth Services
-  UCAS Coordinator, Careers Officers
-  UCAS Clearing Team
-  Sixth Form Specialist form tutors with subject focus

## Assessment & Reporting

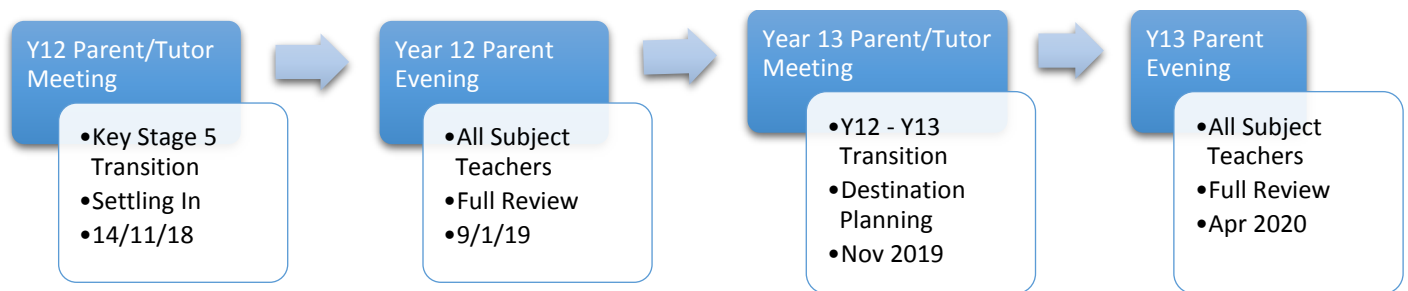
There are a number of formal assessment and reporting points during the year as follows:

- Formal Assessments: w/b 19 November
- Year 12 Exams: w/b 29 April
- Progression into Y13 is dependent on passing Y12 Exams and passing all Y12 Vocational Units
- There are five reporting points during the year:



## Parent & Teacher Meetings

Four timely opportunities to meet face to face with tutors and/or teachers.



## Independent Study

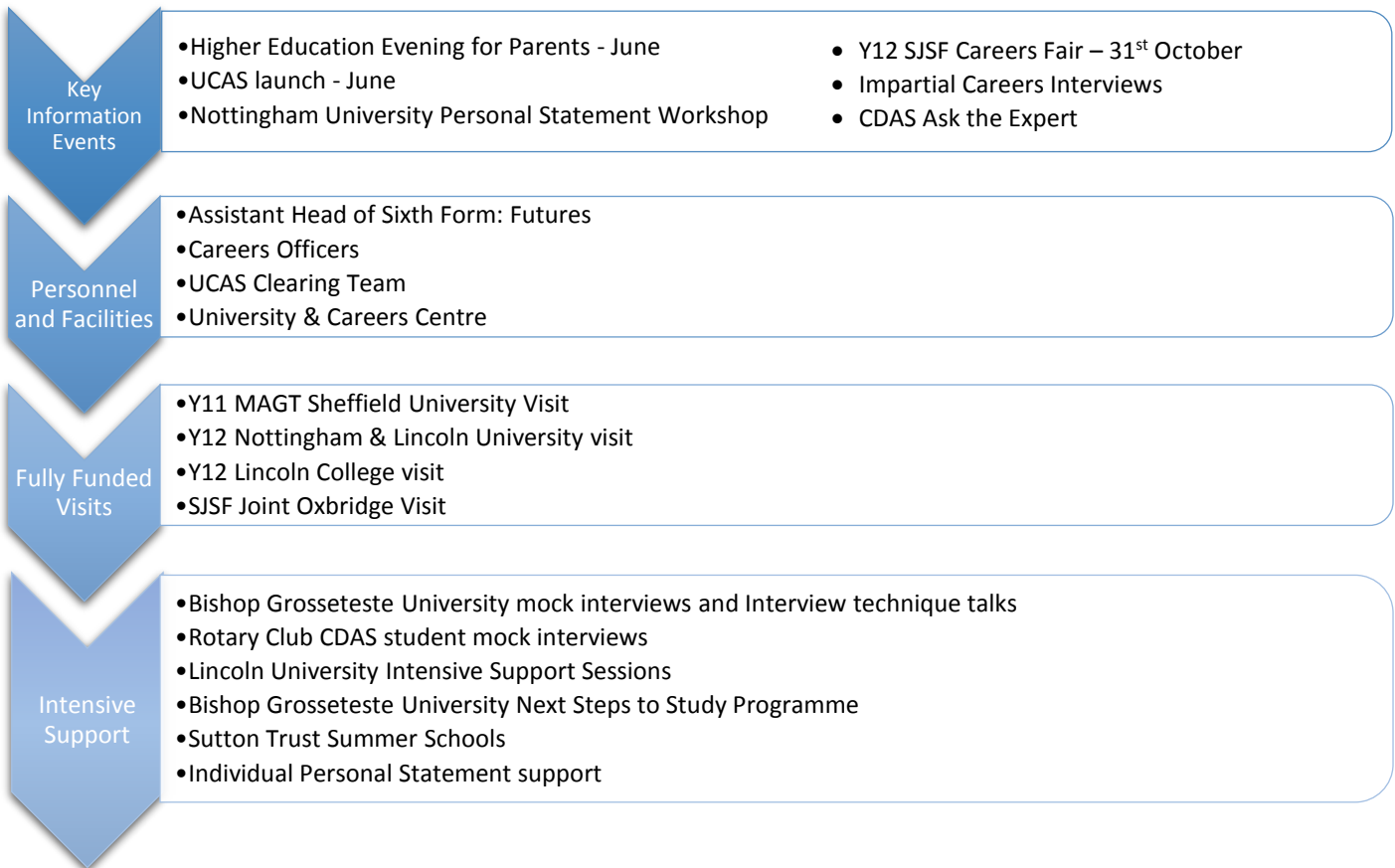
- Becoming an independent learner is the key to success in Sixth Form and also important preparation for next steps
- Students are required to spend about 15 hours outside of school time on their studies
- In addition to formal homework, students should:
  - Review their learning
  - Undertake research and background reading
  - Act on teacher feedback
- Effective organisation is key – they should have a good folder system and some way of taking an overview of their 'to do' list

## Sixth Form Planner -designed by students for students

- Learning Review pages for the holidays with tips
- Interim Review section (green) – parent signature
- Study aids (lilac)
- Future planning (peach)
- Parent's Evening Appt sheet (last page)

## UCAS and Careers (CDAS) Guidance

Supporting informed decisions about next steps after Sixth Form through a wide range of events, opportunities and specialist support.



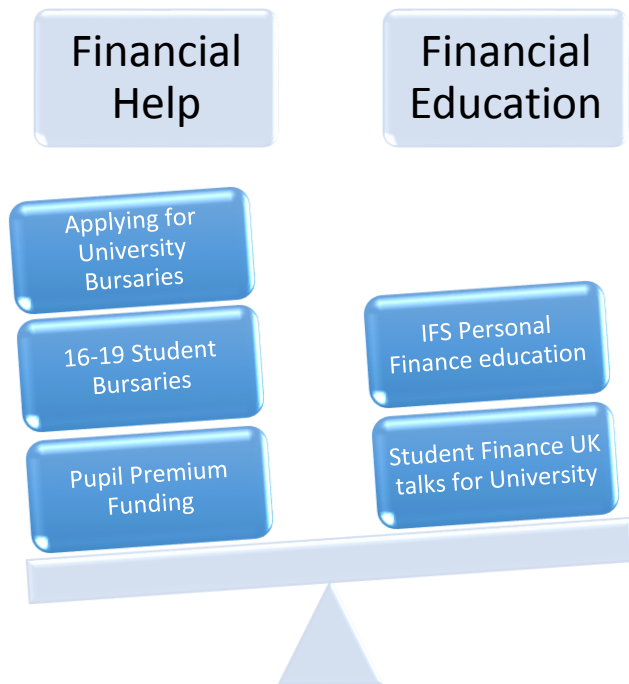
## Employability Enhancement Opportunities

Helping our students stand out from the crowd results in an excellent university offers rate and virtually every student moves on to employment or higher education.



## Financial Support & Guidance

Supporting students and families who need help to ensure access to Sixth Form study as well as helping students develop their own economic well-being.



## Personal Development

Friday lesson 1, every week, students experience a wide range of activities to provide awareness and education to equip them for life.

Personal Health	Safety	Knowledge of Wider World	Study Skills
<ul style="list-style-type: none"> <li>• Sexual health assemblies</li> <li>• School Nurse drop-in</li> <li>• Mental health support &amp; referrals</li> <li>• Healthy eating</li> </ul>	<ul style="list-style-type: none"> <li>• Internet safety</li> <li>• Driving Simulator</li> <li>• Road Safety ILID Day</li> <li>• First Aid training</li> <li>• Social Media</li> </ul>	<ul style="list-style-type: none"> <li>• IFS Certificate in Personal Finance</li> <li>• Alcohol &amp; Drug Awareness</li> <li>• Tolerance &amp; Diversity</li> <li>• Careers Education</li> </ul>	<ul style="list-style-type: none"> <li>• Time Management</li> <li>• Research techniques</li> <li>• Revision techniques</li> <li>• Stress Management</li> <li>• Organisation</li> </ul>

## The most successful Sixth Former will...

- Thoroughly complete their transition packs and hit the ground running
- Be here every day, taking part
- Communicate effectively with
  - Teachers
  - Tutor
  - Mr Mann, Mrs Watson/Mr Walker and Mrs Drake
  - Parents
- Use study periods effectively, planning what to do in advance
- Use their planner effectively
- Have a filing system for their studies
- Be proactive when they have a problem
- Work very hard

